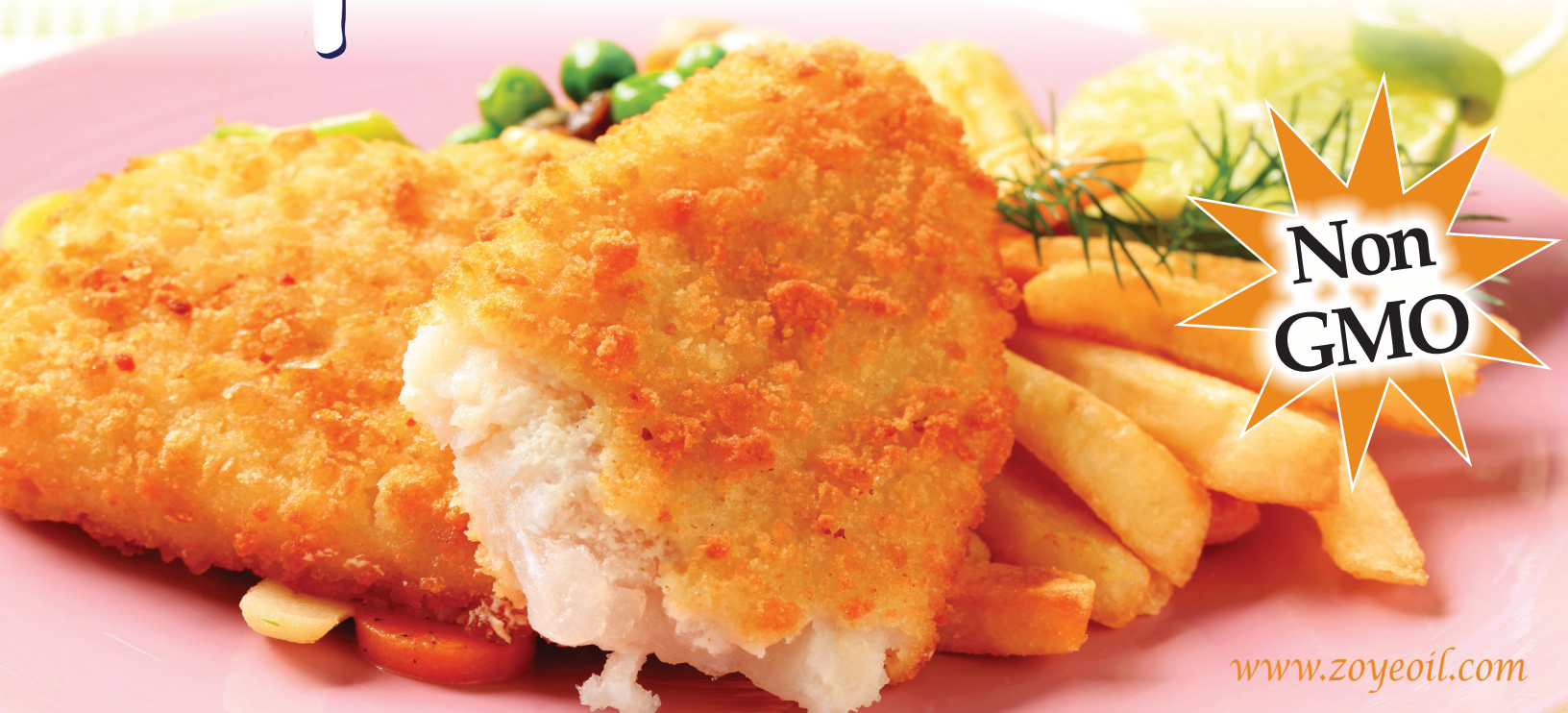




# Premium Ultra Low-Linolenic Salad Oil



[www.zoyeoil.com](http://www.zoyeoil.com)

Product Benefits	Product Applications	Handling
<ul style="list-style-type: none"> <li>• 0g trans fat</li> <li>• 0mg cholesterol</li> <li>• No hydrogenation</li> <li>• Extended fry life</li> <li>• Identity preserved</li> <li>• Ultra low-linolenic acid (18:3), providing natural stability</li> <li>• Non-GMO</li> </ul>	<ul style="list-style-type: none"> <li>• Heavy duty frying</li> <li>• Taste profiled for all types of chip making</li> <li>• Spray oil for crackers               <ul style="list-style-type: none"> <li>• Sauces/dressings</li> </ul> </li> <li>• Non-dairy creamers/powders</li> </ul>	<ul style="list-style-type: none"> <li>• Store at room temperature (65°F to 70°F) in dry and odor-free environment in unopened containers.</li> <li>• Any oil will burn if overheated. If oil smokes, reduce heat.</li> <li>• Oil will pick up flavors if stored near items giving off strong odors.</li> <li>• Do not keep oil, soaked or soiled rags, or other absorbent types of material under high temperature and/or in closed conditions in the presence of oxygen.</li> </ul>

## Nutrition Facts

Serving Size 1 Tbsp (14g)  
Servings Per Container - 256

Amount per serving

**Calories 120**

% daily value\*

**Total fat** 13g **20%**

**Saturated fat** 2g **10%**

**Trans fat** 0g

**Polyunsat fat** 8g

**Monounsaturated fat** 3g

**Cholesterol** 0mg **0%**

**Sodium** 0mg **0%**

**Total Carb** 0g **0%**

**Protein** 0g **0%**

\*The % Daily Value (DV) tells you how much a nutrient in a serving of food contributes to a daily diet. 2,000 calories a day is used for general nutrition advice.

## Packaging Information:

ZFS PRODUCT CODE	SIZE	QUANTITY EACH	QUANTITY PER TIER/ QUANTITY TIERS	QUANTITY PER PALLET	MEASUREMENTS AND NOTES
S/O	1 gallon	6/case	8 per tier/5 tiers	40 cases	9.375" x 12.688" x 23" (2,735.85 cu. in./1.58 cu. ft.) Recyclable containers
S/O	17.5 lbs.	2/twin pack	15 per tier/4 tiers	60 cases	9.625" x 9.875" x 19" (1,805.89 cu. in./1.04 cu. ft.) Recyclable containers
03ZULF035	35 lbs.	1 box	20 per tier/3 tiers	60 boxes	9.50" x 9.75" x 15.125" (1,400.95 cu. in./0.81 cu. ft.) Recyclable containers
10ZULF0420	420 lbs.	1 drum	by request	4 drums	
27ZUFL02100	2,100 lbs.	1 tote	by request	1 tote	

S/O = Special Order.

This information represents typical values and is presented as accurate and reliable; however, no warranty either expressed or implied is made.

UPDATED JUNE 2017

